



MAINBOARD

760GM-E51

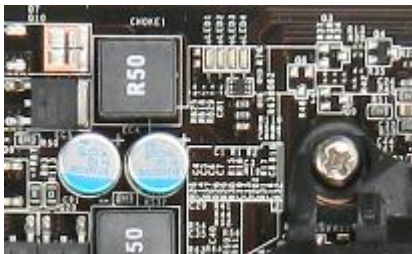


- AMD AM3 Platform
- Support AMD Phenom II™ & Athlon II™ Series Processor
- Support DDR3 Memory

Key Features

APS (Active Phase Switching)

APS (Active Phase Switching) is a complete function to control power demand with a dynamic switching for CPU PWM.



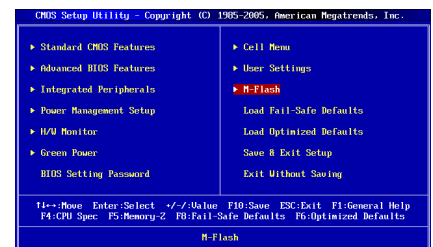
Easy OC Switch

Simplifying the complicated BIOS selections, the user can set different settings by switching for different configurations



M-Flash

It can then be used to rebuild all BIOS information into original state from pen drive which is a convenient and safe repair.



Specifications



Processor	Support for AMD Phenom™ II /Phenom™ /Athlon™ II Processors
Chipset	AMD 760G / SB710
Memory	4 DIMMs support for DDR3-1600/1066/800 MHz up to 16GB max
Video	<ul style="list-style-type: none"> ● ATI Radeon 3000 GPU Integrated with HDMI,DVI,D-Sub port ● 1 x PCI Express x16 slot
Audio	8-channel (7.1) HD Audio subsystem
LAN	10/100/1000 Mbits / sec LAN subsystem
Peripheral interfaces	<ul style="list-style-type: none"> ● 5 x SATA 3.0 Gbps ports , 1 x eSATA from SB710 ● 1 x PATA IDE port with ATA-100/133 support ● 12 x USB 2.0 ports (6 x external, 6 x internal)
Expansion capabilities	<ul style="list-style-type: none"> ● 1 x PCI-Ex1 slot ● 2 x PCI slots
Accessories	<ul style="list-style-type: none"> ● SATA & PATA Cable ● Power Convert cord